

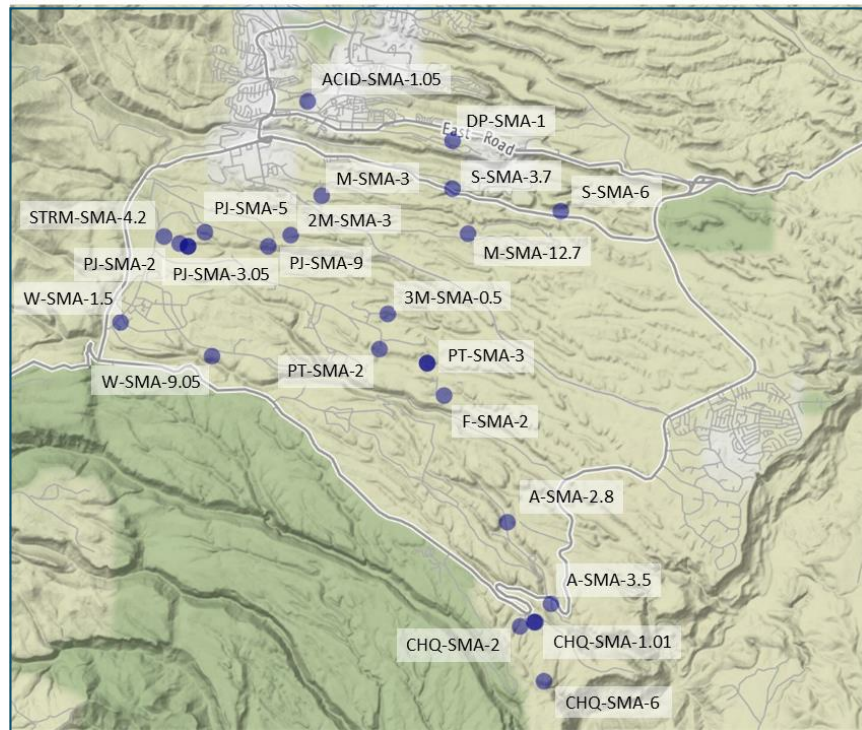
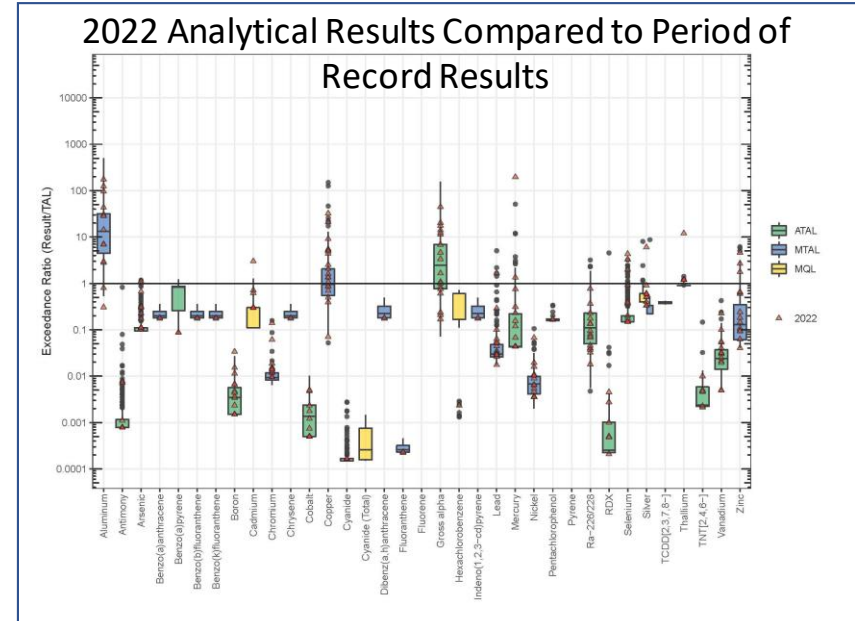


Individual Permit Storm Water Samples Collected in 2022 Monitoring Season



- Sampler activation for 2022 Individual Permit monitoring season began March 2022
- **182** samples planned at **136** monitoring locations
- **26** storm water samples collected for analysis
- Samplers inspected at least every **45** days, and more frequently when storm rain events occur
- Sampler deactivations began October 25, 2022 due to winter season and freezing conditions

SMA	Sample Date	Sampling Event	TAL Exceedances
3M-SMA-0.5	7/27/2022	CAM5 Sample 1	Copper (1.3x), Gross Alpha (20x)
ACID-SMA-1.05	7/27/2022	MEX Partial	Gross Alpha (1.1x), pending PCB data
A-SMA-2.8	7/27/2022	MEX	Total Aluminum (174x), Gross Alpha (45x), Selenium (4.3x)
A-SMA-3.5	7/12/2022	MEX Sample 2	Total Aluminum (30x), Gross Alpha (18x)
CHQ-SMA-1.01	7/12/2022	MEX	Total Aluminum (124x), Copper (5.1x), Gross Alpha (11x), Mercury (200x), Selenium (3.3x), Total PCBs (34x)
CHQ-SMA-2	7/30/2022	CAM5-2 Sample 1 Partial	None, pending PCB data
CHQ-SMA-6	7/12/2022	CAM5-2 Sample 1	Copper (9.1x), Gross Alpha (14x)
DP-SMA-1	6/27/2022	MEX	Total Aluminum (6.9x), Copper (2.1x)
F-SMA-2	7/27/2022	CAM5-2 Sample 2	Total Aluminum (97x), Copper (1.6x), Gross Alpha (19x), Selenium (2.8x)
M-SMA-12.7	8/16/2022	MEX	Total Aluminum (43x), Gross Alpha (18x), Mercury (1.4x)
M-SMA-3	7/27/2022	CAM5 Sample 1	Total Aluminum (2.8x), Total PCBs (1.1x)
PJ-SMA-2	7/31/2022	MEX	Total Aluminum (6.9x), Copper (5.3x), Zinc (1.8x)
PJ-SMA-3.05	7/20/2022	CAM5-2 Sample 1	Copper (2.3x), Gross Alpha (1.1x)
PJ-SMA-3.05	8/6/2022	CAM5-2 Sample 2	None
PJ-SMA-5	7/26/2022	CAM5-2 Sample 2	Copper (32x)
PJ-SMA-9	7/27/2022	CAM5 Sample 2	Total Aluminum (28.2x), Copper (2.5x), Gross Alpha (3.1x)
PT-SMA-2	8/11/2022	CAM5-2 Sample 2	Gross Alpha (13x)
PT-SMA-3	7/4/2022	CAM5 Sample 1	Total Aluminum (14x), Copper (5.4x)
PT-SMA-3	7/27/2022	CAM5 Sample 2 Partial	None
S-SMA-3.7	7/30/2022	MEX	Copper (21x), Total PCBs (60x), (Zinc 4.6x)
S-SMA-6	7/26/2022	CAM3-3 Sample 2	Copper (5.0x), Gross Alpha (2.0x), Lead (1.7x)
STRM-SMA-4.2	7/4/2022	CAM5-2 Sample 2	Dissolved Aluminum (1.04x), Copper (1.1x)
W-SMA-1.5	7/4/2022	CAM5-2 Sample 2	Total Aluminum (2.9x), Copper (1.4x), Zinc (2.7x)
W-SMA-9.05	6/26/2022	MEX Sample 2	None



2022 Sample Collection Locations

